

TOURIST TRAINS AND LUXURY TRAINS



renfe

LUXURY TRAINS

TOURIST TRAINS



El expreso de
La Robla
renfe



trenes
turísticos
DE **DÍA** renfe



WELCOME
TO THE HOLIDAY
OF YOUR DREAMS



LUXURY TRAINS

WELCOME TO ANOTHER WAY
TO SEE THINGS, TO ENJOY,
TO TRAVEL.

CONTENTS

LUXURY TRAINS

THE EL TRANSCANTÁBRICO GRAN LUJO

THE TRAIN	4-5
THE ACCOMMODATION	6-7
THE COMMON SALOONS	8-9
EL VIAJE	10-11

THE AL ÁNDALUS

THE TRAIN	12-13
THE ACCOMMODATION	14-15
THE COMMON SALOONS	16-17
EL VIAJE	18-19

THE COSTA VERDE EXPRESS

THE TRAIN	20-21
THE ACCOMMODATION	22-23
THE COMMON SALOONS	24-25
THE ITINERARY	26-27

TOURIST TRAINS

THE LA ROBLA EXPRESS

THE SALOONS	30
THE COMPARTMENTS	30
THE ITINERARY	31
THE CREW	31

DAY TRAINS 32-33

GROUP TRIPS, EVENTS AND FILMING 34

Welcome to another way to see things, to enjoy, to travel. A unique experience on board a palace on rails that will take you to the best destinations in Spain: the Cantabria Coast and its unparalleled landscape, the charm of Andalusia and its fusion of cultures and the surprising lands of Castile and Leon alongside the Camino Trail. A new concept of travel, to enjoy every minute from the moment you depart until your return.

Welcome to the sophistication and excellence of the mythical train journeys of the beginning of the last century. Our trains offer first class accommodation with all modern conveniences, aboard an authentic locomotive service that maintains all the glamour and offers a holiday full of unique sensations and experiences.

Welcome to the most exquisite fine dining, to exclusive visits and unforgettable landscapes, magical trips through culture and nature in an intimate and unique environment, where friendly staff take care of every detail.

Welcome to the holiday of your dreams. Discover that travelling is perhaps the most beautiful of shared passions.



EL TRASCANTÁBRICO GRAN LUJO

Join us on the North Coast of Spain for eight days of authentic experiences, aboard the El Transcantábrico Gran Lujo.

On the *El Transcantábrico*, all you need to do is enjoy the pleasure of the journey, where the most important thing is not the destination, but the itinerary and the charm of an authentic rail travel experience. In every moment you will be seduced by the fertile diversity of the northern landscapes, with rugged mountain ranges and spectacular coastlines, fields, roads, forests and rivers that appear in your window as a succession of postcards, each one more beautiful than the last. This week-long tour will take you towards to the Cantabrian Coast aboard the most luxurious hotel on rails, with all modern conveniences and excellent service onboard Renfe Luxury Tourist Trains.

On board the *El Transcantábrico Gran Lujo*, passengers can experience special places and the nostalgia and elegance

of the old railway as it was at the beginning of the last century. Enjoy unique experiences, the pleasure of seeing, hearing, smelling, touching and tasting; allow time to flow with the cadence of a gentle rattle in a forward motion while you discover new places and sensations. The train, the suites, the itinerary, the crew, the gastronomy... everything on board the *El Transcantábrico Gran Lujo* is designed for a single purpose: to offer an unforgettable and unique holiday.

Like its brothers the *Al Ándalus* and the *Costa Verde Express*, the story of *El Transcantábrico Gran Lujo* is a story of dreams and creativity, of recovering important pieces of a locomotive era that are once again on the rails

with quality features and details that are difficult to find on any railroad in the world.

Its saloon cars, authentic icons of the railway heritage, were inaugurated at the end of the 1920s for the purpose of providing a service of the highest level to the Bourgeois classes on their leisure trips. The elegant interior decor recalls that time in every detail and turns these rooms into luxurious spaces where you can enjoy fine dining, a relaxed drink or an evening of fun and good company with your fellow travellers. The panoramic car, with large windows, will show you hundreds of images of overflowing beauty every day.





Accommodation

The suites on board the *El Transcantábrico Gran Lujo* are designed for rest and privacy. With just 14 suites in seven cars, spaciousness, comfort and exclusivity are guaranteed. Each suite is available as single, double or triple occupancy.

GREAT LUXURY SUITE. A spacious room lined in wood and adorned with exclusive details. Each suite has a lounge room, bedroom and private bathroom. The sleeping area has a large double bed (150 x 200 cm) or individual twin beds, a TV and a wardrobe, while the lounge room area has a comfortable sofa, which can also be made into a bed. A luggage compartment, desk, safe, minibar, flat screen TV, music stereo, adjustable air conditioning, a multi-media computer with free internet connection and a telephone offer every convenience. All suites have a private, spacious and comfortable bathroom with a hydromassage shower and steam sauna, hairdryer and a welcome set with toiletry items.



Grand Luxury Suite; single beds.



Grand Luxury Suite; double bed.



To travel on the *El Transcantábrico Gran Lujo* is to enjoy the most pleasant and original travel experience, an unforgettable tour of the Cantabria Coast, with an exclusive and personalised service provided by our crew and the tranquillity of an all-inclusive holiday, on which all you need to do is to enjoy every moment.





The common saloons

They are original 1923 Pullman cars, iconic examples of the authentic rail travel of the era, especially designed and decorated for the *El Transcantábrico Gran Lujo*.

A-la-carte breakfasts are served daily in the common areas and in the dining cars you can savour the finest gastronomy prepared by a distinguished chef, and the bar is open for you to enjoy throughout the entire trip.

The saloons offer national and international press, television, a film library, books, board games, etc. You can relax in the panoramic saloon, enjoy a snack in the tea room or a lively evening in our pub car, where there are parties, live music and live performances every night.

Our crew will assist you at all times and will take care of everything you need.





The crew includes a selection of professionals who are there to make sure your experience is a special one. Both in the common saloons and in the private compartments, passengers will enjoy dedicated and personalised service.





The itinerary

To travel on the *El Transcantábrico Gran Lujo* is to enjoy the most pleasant and original travel experience, an unforgettable journey along the Cantabria Coast where all you need to do is enjoy every moment, without having to pack and unpack your luggage. Dazzling landscapes, ancestral culture and fine dining are the hallmarks of this vintage train.

Every day begins with an exquisite a-la-carte and buffet breakfast. After breakfast, the day's fun and activities begin, including tickets to monuments and shows, always accompanied by a multilingual guide. A private coach takes you comfortably to each of the attractions on the tour. In the afternoon, or after dinner, there are shows to enjoy on board in the pub car, with several live performances throughout the trip. You can also have a drink in another of the charming saloons or go for a walk in the town where the train is stationed. The train will wait for you at the station until the next morning, remaining parked overnight so that you can rest peacefully.



In general, comfortable clothes and shoes are recommended for the day so that you can enjoy the visits, while at night you can opt for more formal attire, although dress code is always at your discretion.



Gastronomy. Whether in the elegant carriages or in any of the restaurants that offer fine dining along the route, the renowned gastronomy of Northern Spain is one of the hallmarks of Renfe's luxury trains.





TREN AL ÁNDALUS

Climb aboard the Al Ándalus train and discover why this palace on rails is considered the largest and most spacious luxury train in the world.

Travelling on the *Al Ándalus* train is like travelling through time. It was conceived to offer the highest levels of elegance and comfort, with magnificent saloon cars and comfortable suites that transport travellers to the golden age of the foxtrot and the sophistication of the Belle Époque. The delicate marquetry, varnished and engraved panels, original hat holders and exquisite interior decor tell a story about other times and fashions, the legacy of luxury and the exclusivity of its origins.

Not surprisingly, cars belonging to the same series as the *Al Ándalus* train once rattled along the tracks that cross France, from Calais to the Côte d'Azur, with members of the British monarchy as illustrious passengers.

The *Al Ándalus* train started out as a tourist train in 1985, recovering and restoring old cars from the 1920s to once again display their elegance and sophistication on the

Spanish railway lines. The train was remodelled in 2010 and its saloons are today the perfect setting for a-la-carte breakfasts, dinners and meals designed by chefs of renowned prestige. A space to chat with fellow travellers, enjoy a coffee, a sherry or a delicious cocktail, or just let your imagination fly as you relax while contemplating the stunning landscapes through panoramic windows.

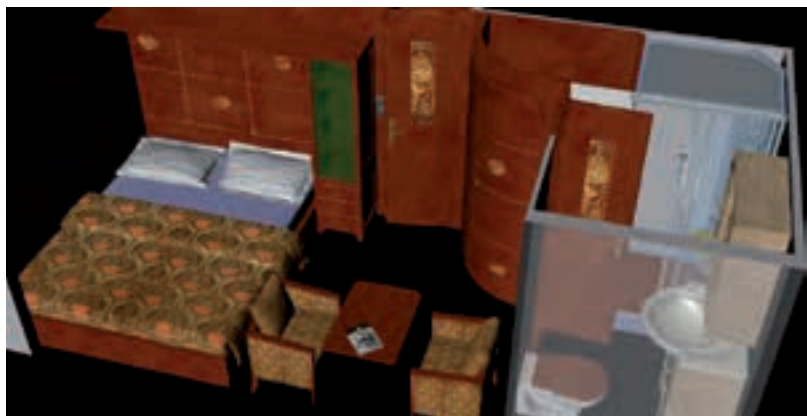




Accommodation

DELUXE SUITE. A spacious and elegant suite with a bedroom and private bathroom, perfectly appointed for rest and privacy. It has a large double bed (200 x 150 cm) that folds into a comfortable sofa during the day. The spacious and comfortable bathroom has a shower, a hairdryer and a welcome kit with toiletry items. A safe, mini bar, wardrobe, luggage compartment and climate control are other 21st-century comforts that are perfectly adapted to the original appearance of this historic train.

FIRST CLASS BEDROOM. A charming room with a private bathroom that preserves the dimensions and nostalgia of the original compartments. It has two single beds that are transformed into comfortable armchairs during the day, as well as a minibar, safe, wardrobe, luggage store and adjustable climate control. Its functional private bathroom takes the best advantage of the available space, with a shower, a hairdryer and a welcome kit with toiletry items.



Deluxe suite; double bed.



First class bedroom, single beds.



*The bedrooms on board the **Al Ándalus** are designed for your rest and privacy and have all the comforts offered by first class accommodation, with all the elegance and charm of classic trains.*

During the day your bed folds down into a comfortable sofa, making the room spacious and comfortable.





The common rooms

The *Al Andalus* train has four beautifully-appointed carriages, four saloon cars from the years 1928 and 1930. These common areas are designed for leisure and the pleasure of travelling in the widest and most spacious train so that you can enjoy a buffet breakfast, lunch or dinner on board, a relaxing drink, listen to musical performances, contemplate the landscapes or simply relax in comfortable armchairs.

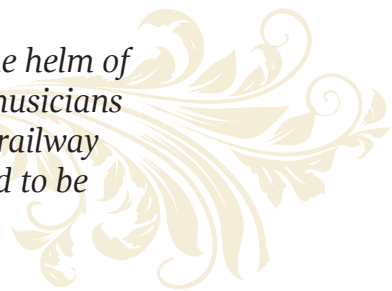
All cars are air conditioned and open 24 hours a day for your enjoyment. The entire train is connected internally, allowing free passenger movement throughout.

The restaurant cars, bar cars and tea room cars are all open for you to enjoy and the waiter service provides assistance for everything you need throughout the journey.





The crew is led by the Expedition Director, who as captain of the ship is at the helm of this railway cruise to the final destination. The guide, head waiter, waiters, musicians and entertainers, cleaning staff, security staff, train driver, coach driver and railway technicians take care of every detail to make sure that the only thing you need to be concerned with is enjoying every special moment of your great rail journey.





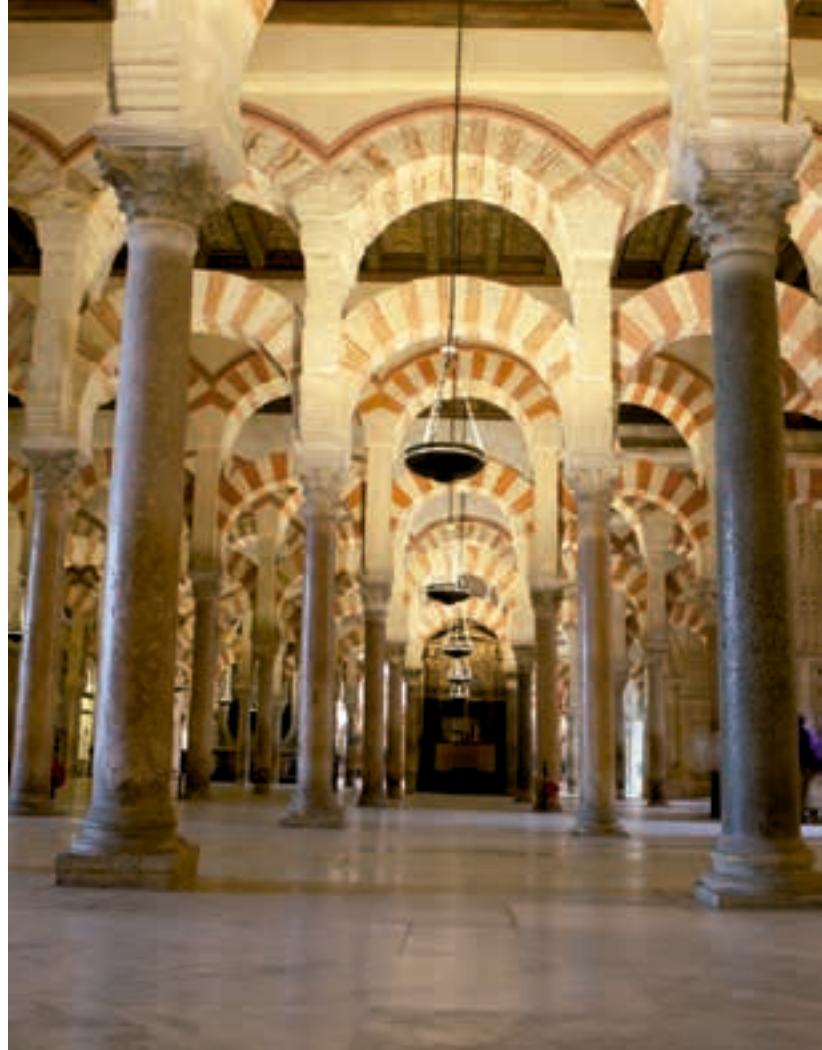
The itinerary

The *Al Ándalus* train is an authentic moving palace. The crew takes care of your every need so that all you need to do is relax and enjoy every moment and experience every destination from the elegance and comfort of a luxury train. On this magical journey, the train becomes a luxury hotel on rails, passing through breathtakingly beautiful landscapes, each one unique and more beautiful than the last; this is a travel experience unlike any other.

The train is your hotel throughout the entire journey so there is no need to pack and unpack your luggage.

In general, comfortable clothes and shoes are recommended for the day so that you can enjoy the visits, while at night you can opt for more formal attire, although dress code is always at your discretion.





***Gastronomy.** To travel aboard the Al Ándalus is to explore the rich Spanish gastronomy, with its delicious dishes that are rooted in the culinary traditions of the towns that have shaped the country's history. Whether in the saloons or in any of the restaurants that offer carefully prepared culinary selections throughout the trip, your meals are designed to offer sensational experiences for all the senses while you share special moments in good company. World-famous products such as olive oil, Jerez wine and Iberian acorn-fed ham pair perfectly with refreshing dishes such as gazpacho and typically Andalusian dishes, such as oxtail.*





COSTA VERDE EXPRESS

All aboard the Costa Verde Express to enjoy the pleasure of travelling on the flagship of our luxury tourist trains.

The *Costa Verde Express* is the continuation of the *El Transcantábrico Gran Lujo*, which was inaugurated in 1983 as a risky and innovative undertaking, becoming the first tourist train in Spain. The initiative was a success and, after years of growth and improvement, has today become the *Costa Verde Express*, a highly prestigious and unique travel product that is internationally renowned.

A nostalgic and pleasant atmosphere, friendly and well-trained crew, a tour of the unique landscapes and vast culture

of northern Spain, seasoned with exquisite fine dining. These are the ingredients that make each trip on the *Costa Verde Express* a real pleasure for all the senses. The pinnacle of elegance and comfort, the *Costa Verde Express* takes the traveller to the Golden Age of great rail travel, while still offering all the comfort and convenience of the 21st century.

Its saloon cars host delicious a-la-carte and buffet breakfasts and select lunches and dinners are carefully prepared by a prestigious chef. There are magical and nostalgic spaces for you to enjoy a drink, participate in the fun or chat with travel companions, while feeling like you are moving along in time and space.





Accommodation

The accommodation rooms on the *Costa Verde Express* are furnished with everything you need to enjoy the most comfortable stay on board.

THE FIRST CLASS SUITE is a charming room with distinctive wooden cladding and a warm and welcoming ambience. It has air conditioning with an independent regulator and a double bed, as well as other amenities to make your stay even more pleasant: a desk, wardrobe, luggage store, minibar and safe. The suites have a complete private bathroom equipped with a hydromassage shower/steam sauna, a hairdryer and a welcome set with toiletry items.

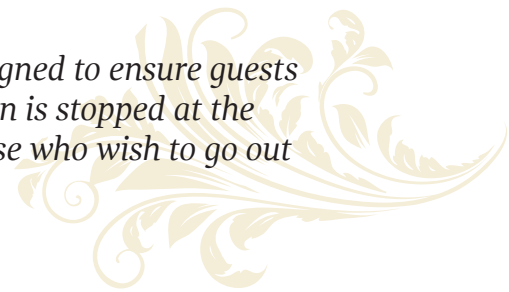
Travellers can enjoy the landscape through a panoramic window. Inside, the entire train is connected, allowing passengers to move freely through it.



First Class Suite.



*In every suite on the **Costa Verde Express**, the space is especially designed to ensure guests enjoy rest and privacy. Travellers can sleep comfortably while the train is stopped at the station. This avoids the rattle that can interrupt sleep and allows those who wish to go out at night to enjoy the nightlife in each town on the itinerary.*





The common rooms

The four saloon cars are the most unique and beautiful space on the train; they are authentic railway treasures that are admired for their exterior design, their finish and interior decor.

One of the four saloons has a bar and dance floor, the pub car, decorated and illuminated as a small party room where there is lively entertainment every night. Another room has a second bar for a relaxing drink. In the other two rooms you can read, share a board game, chat or contemplate the landscape through the panoramic windows. Wherever you are, a friendly waiter service is always available to you.

Travellers can enjoy daily press, magazines, a careful selection of books from the library, television, film library; in short, every detail has been thought of to make your trip a real pleasure.





The crew on all of our trains includes carefully selected professionals who are available at all times to ensure you have everything you need.

Also, all the trains are always accompanied by our luxury coach to take passengers to their scheduled visits and to the different restaurants along the route.





The itinerary

The *Costa Verde Express* takes a unique tour of the Cantabria Coast. Magnificent landscapes, fine dining and art and culture are all a part of this magical and unique journey aboard the oldest one of the luxury tourist trains in Spain.

During the day, and after enjoying an exquisite a-la-carte breakfast and buffet, tours are planned that are always accompanied by a guide. Your private coach takes you comfortably to each of the points of interest on the route. The day ends with dinner, after which you can enjoy an evening of leisure in good company.

There are parties on board in the evenings, with several live performances. You may also choose to enjoy peaceful and reflective moments in another of the saloon cars, rest in your room or go for a walk in the town where the train is stationed. The train waits until the next morning, remaining parked overnight so you can rest comfortably.





The renowned *Spanish cuisine*, with its delicious and traditional dishes, is one of the highlights on the Costa Verde Express. The innovative cuisine of Northern Spain offers a culinary and cultural journey of fine dining in the elegant train rooms, as well as in the restaurants that offer a superb gastronomic selection. All of which is accompanied by the finest wines from the prestigious denominations of origin of northern Spain.



TOURIST TRAINS

WELCOME TO ANOTHER WAY
TO SEE THINGS, TO ENJOY,
TO TRAVEL.

Discover Spain at a leisurely pace on board our tourist trains, authentic railway wonders, with the exclusive service of our crew and the simplicity of a perfectly organised trip.

Renfe Tourist Trains offer an innovative way to enjoy sightseeing at affordable prices. Enjoy several days of travelling on the La Robla Express, sleeping on board with excursions during the day, or take the Day Trains that offer single-day excursions, departing in the morning and returning in the afternoon. In both cases, a luxury coach takes you to the scheduled visits and restaurants in comfort and style, always accompanied by a guide who will keep you informed at all times.

See our website for information about routes and departure dates.



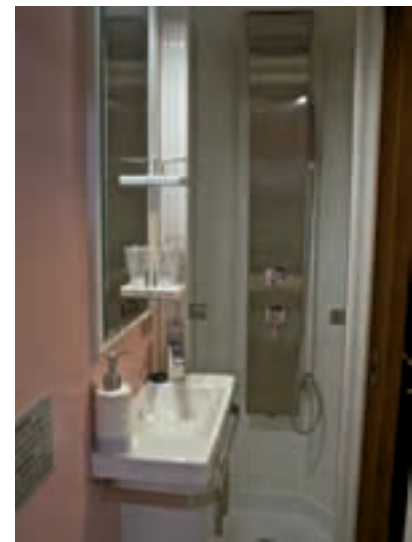
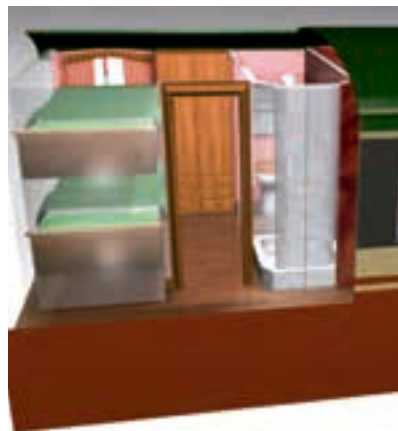


EL EXPRESO DE LA ROBLA

T

The *La Robla Express* offers you the opportunity to travel onboard a period train with all modern conveniences and at a very affordable price. A trip very different from any other, with nostalgia and at the same time all the modern conveniences of a great holiday on rails.

A train with three saloon cars and four sleeper cars, all with independent bathrooms, air-conditioning and with all the modern technological conveniences of our times. A train made for the enjoyment and pleasure of travelling and contemplating the beautiful Castilian landscapes from panoramic windows while rolling alongside the historical Camino Trail.



The saloons

The common spaces of *La Robla Express* are in three comfortable saloon cars with 24-hour bar service and panoramic windows to enjoy the landscape that runs slowly at the pace of the train gently rolling along the tracks.

Every morning in these saloons you can enjoy the exquisite open buffet that is prepared for breakfast.

There are daily newspapers, magazines, a book library, film library and television. The rooms are air conditioned and have a PA system and music, as well as a computer available to customers with free internet connection.

The compartments

The *La Robla Express* has four sleeper cars with seven compartments each, all equipped with bunk beds, two per compartment, a wardrobe, reading light, air conditioning, music, PA system, telephone, etc.; a modern and inspiring environment that allows you to rest comfortably. Each compartment has its own bathroom with hydromassage shower, sink, toilet and hair dryer. The electric current is 220 v.

Inside, the entire train is connected, allowing passengers to move freely throughout the entire length of the train.





The itinerary

The *La Robla Express* transports you along the most beautiful narrow-gauge line in Spain. The emblematic León-Bilbao line.

During the trip, a coach accompanies the train for the entire journey to take you to the different places and visits alongside the Camino Trail through Castile and León, always accompanied by a guide.

The crew

The crew, including waiters, porters, maintenance technicians, a coach driver, accompanying guide and security, is led by our senior Expedition Director, who will make sure your trip is a unique experience.

The breakfast buffet is served in the different saloon cars during the morning. Lunches and dinners are held in restaurants along the route to coincide with the different visits.







INFORMATION AND RESERVATIONS

Aixa Dreams. S.L.U.
San Antón, 72 -6º of 3 18005 Granada - Spain
+34 958 252 670

EMAIL:
aixadreams@aixadreams.com
www.aixadreams.com

